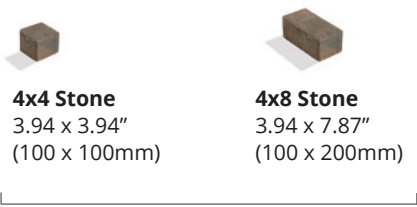


# Beaumont 80mm

## SIZES

4x8 Standard Bundle



**4x4 Stone**  
3.94 x 3.94"  
(100 x 100mm)

**4x8 Stone**  
3.94 x 7.87"  
(100 x 200mm)

Both sizes packaged together  
(2 - 4x4, 53 - 4x8 per layer)



**8x8 Stone**  
7.87 x 7.87"  
(200 x 200mm)

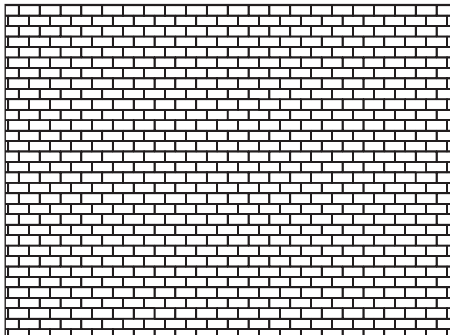
**Individually Packaged**

**8x12 Stone**  
7.87 x 11.81"  
(200 x 300mm)

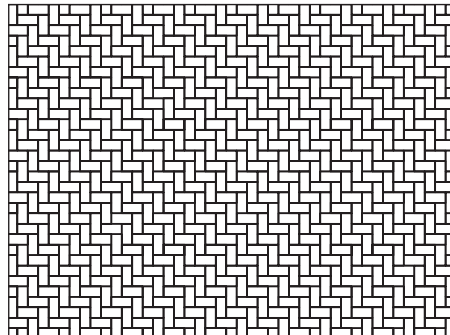
**Individually Packaged**

## PATTERNS

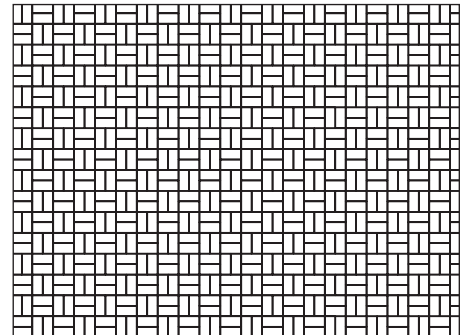
NOTE: AUTOCad DWG and PAT files are available for all Beaumont patterns.



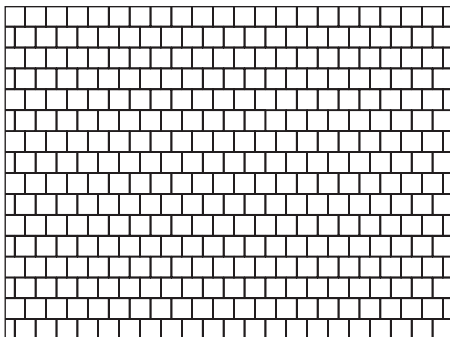
**Pattern A**  
(4x8 Half Running Bond)



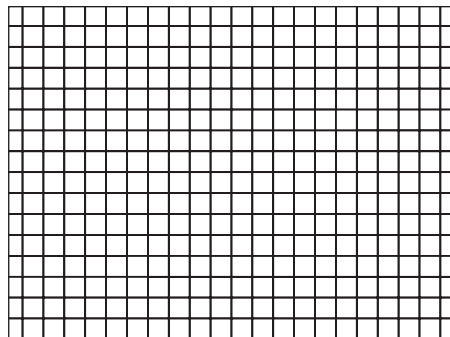
**Pattern B**  
(4x8 Herringbone)



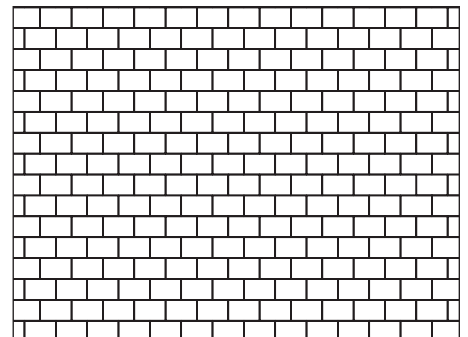
**Pattern C**  
(4x8 Basketweave)



**Pattern D**  
(8x8 Half Running Bond)



**Pattern E**  
(8x8 Stack Bond)

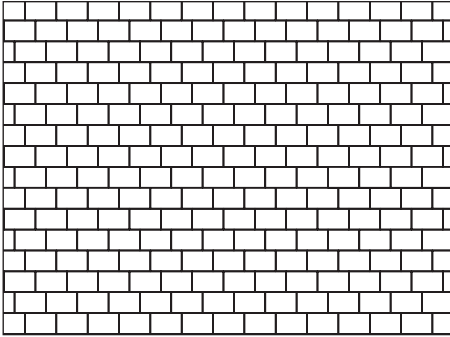


**Pattern F**  
(8x12 Half Running Bond)

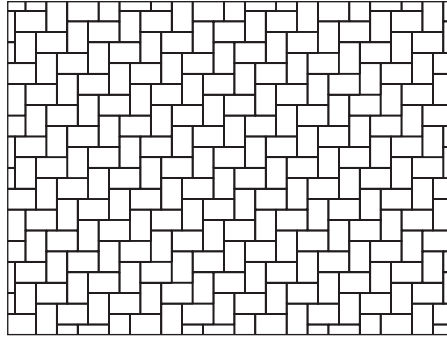
# Beaumont 80mm

## PATTERNS

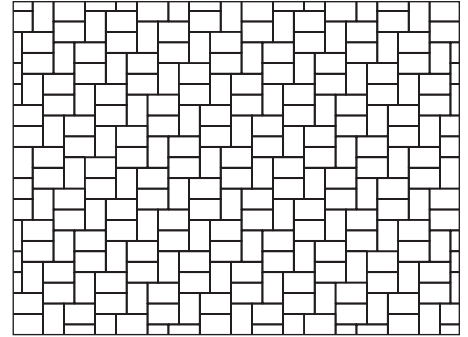
**NOTE:** AUTOCad DWG and PAT files are available for all Beaumont patterns.



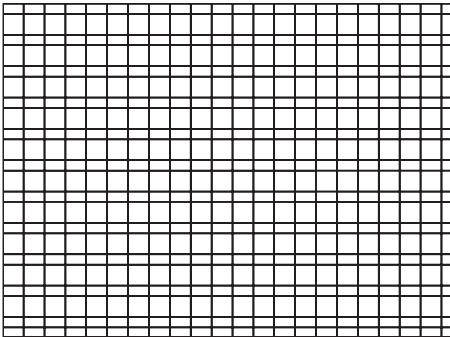
**Pattern G**  
(8x12 Third Running Bond)



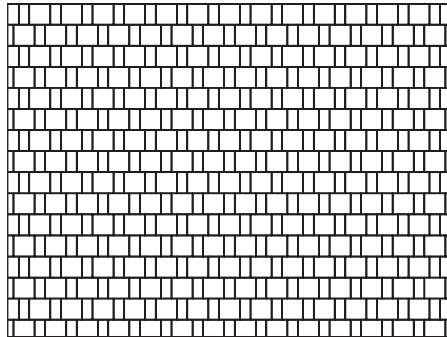
**Pattern H**  
(8x12 Herringbone)



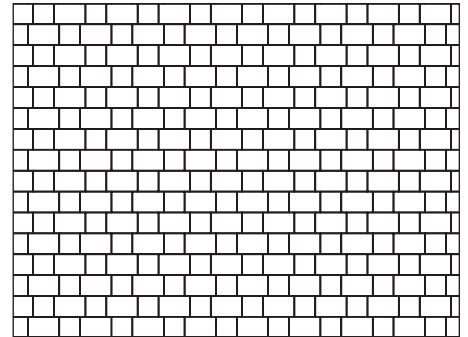
**Pattern I**  
(8x12 Cascade)



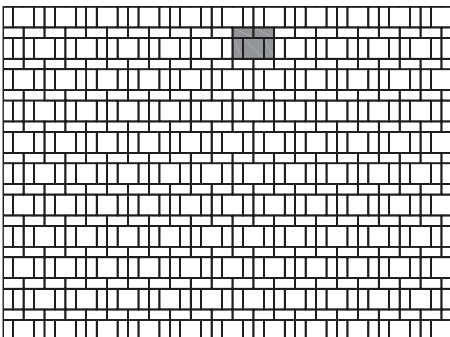
**Pattern J**  
(4x8, 8x8 Stack Bond)



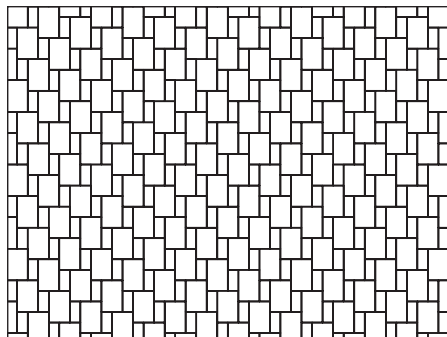
**Pattern K**  
(4x8, 8x8 Alternating Running Bond)



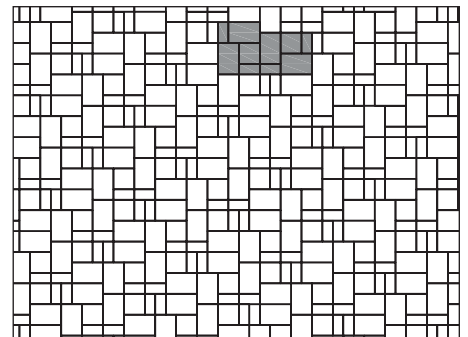
**Pattern L**  
(8x8, 8x12 Alterating Running Bond)



**Pattern M**  
(4x8, 8x8 Patchwork)



**Pattern N**  
(4x8, 8x12 L Shape)

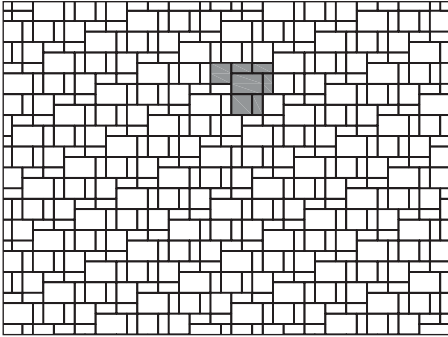


**Pattern O**  
(4x8, 8x8, 8x12 Cluster)

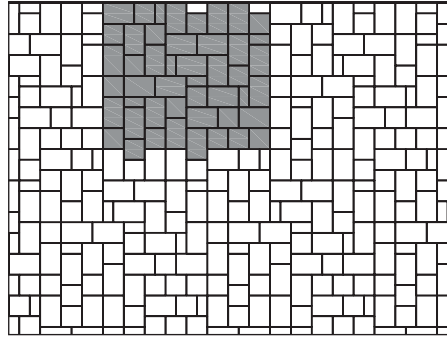
# Beaumont 80mm

## PATTERNS

NOTE: AUTOCad DWG and PAT files are available for all Beaumont patterns.



**Pattern P**  
(4x8, 8x8, 8x12 Cluster)



**Pattern Q**  
(4x8, 8x8, 8x12 Cluster)

Pattern	4x8 Stone		8x8 Stone		8x12 Stone	
	%	Ratio	%	Ratio	%	Ratio
Pattern A	100	1				
Pattern B	100	1				
Pattern C	100	1				
Pattern D			100	1		
Pattern E			100	1		
Pattern F					100	1
Pattern G					100	1
Pattern H					100	1
Pattern I					100	1
Pattern J	33.3	1	66.7	1		
Pattern K	33.3	1	66.7	1		
Pattern L			40	1	60	1
Pattern M	66.7	4	33.3	1		
Pattern N	25	1			75	1
Pattern O	20	4	20	2	60	4
Pattern P	36.3	4	36.3	2	27.4	1
Pattern Q	5.4	6	30.4	14	64.2	24