

NEW



Eterna Collection

Molina® Ferro Finish 60mm (NON-STOCK)



CLOUDBURST



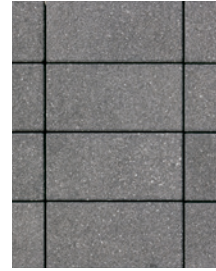
DOVER **NEW!**



LUNA



MORAINE

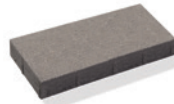


TWILIGHT



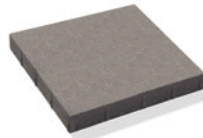
6x12 Stone
5.91 x 11.81"
(150 x 300mm)

Individually Packaged



12x24 Stone
11.81 x 23.62"
(300 x 600mm)

Individually Packaged



24x24 Stone
23.62 x 23.62"
(600 x 600mm)

Individually Packaged

Molina® Ferro Finish is a non-stock (made-to-order) extension of our original Molina® product line, developed to provide a slip-resistant finish, and both a visual and textural contrast when used as a decorative border or accent piece, not only for Molina® but for any of our 60mm or 80mm (2.36" or 3.15") slab and paver products.

As part of the Eterna Collection of products, Molina® is manufactured to withstand the test of time using our EliteFinish™ technology. This means that when the shot blast is applied to the surface layer to reveal the enticing Ferro Finish texture, only the finer, most durable aggregates are exposed.



**SLIP-RESISTANT FINISH
VISUAL AND TEXTURAL CONTRAST
WHEN USED AS A DECORATIVE
BORDER OR ACCENT**



See the difference Molina®
Ferro Finish can make!
Scan to view!





Packaging Specs

† Packaged with mesh between layers.

| MOLINA® FERRO FINISH 60mm | BUNDLE SPECIFICATIONS | | | | | PER SECTION SPECIFICATIONS | | | | |
|------------------------------|-----------------------|---------|---------------------------------|--------|--------|----------------------------|---------|---------------------------------|--------|--------|
| | LAYERS | SQ. FT. | LIN. FT. | PIECES | WEIGHT | SECTIONS | SQ. FT. | LIN. FT. | PIECES | WEIGHT |
| 6x12 Stone | 8 | 93 | 94.5 (soldier) 189 (sailor) | 192 | 2740 | Layer † | 11.6 | 11.8 (soldier) 23.6 (sailor) | 24 | 343 |
| 12x24 Stone | 8 | 93 | 47.3 (soldier) 94.5 (sailor) | 48 | 2796 | Layer † | 11.6 | 11.8 (soldier) 23.6 (sailor) | 6 | 350 |
| 24x24 Stone | 10 | 77.5 | 39.4 (soldier) | 20 | 2346 | Layer † | 11.6 | 3.9 (soldier) | 2 | 235 |

All Oaks Landscape products fully meet or exceed the latest version of CSA A231, ASTM C936, ASTM C1372 or ASTM C1782 as applicable to the specific product and area of sale.

Recommended Uses

| PRODUCT | THICKNESS | SIZES |     | | | |
|---------------------------------|-----------|-------------|---|---------------|----------|--------------|
| | | | POOL DECK | PATIO/WALKWAY | DRIVEWAY | EliteFinish™ |
| Molina® Ferro Finish | 60mm | 6x12 Stone | ✓ | ✓ | | ✓ |
| | | 12x24 Stone | ✓ | ✓ | | ✓ |
| | | 24x24 Stone | ✓ | ✓ | | ✓ |

Our Molina® 60mm with EliteFinish™ delivers richer and more vibrant color and a harder wearing, more durable surface.

NON-STOCK PRODUCTS: Please be aware that these products are made to order as required. Minimum quantities and advance lead times must be considered to ensure your products arrive on time. Contact your Oaks Sales Representative to discuss your project requirements prior to specifying.



OAKSPAVERS.COM

US 1.800.876.OAKS (6257) | CA 1.800.709.OAKS (6257)

Product representations shown in this publication are intended to convey the general color, texture and appearance of the product. Variations may occur in the manufacturing and printing process. Always select from current, physical product samples.