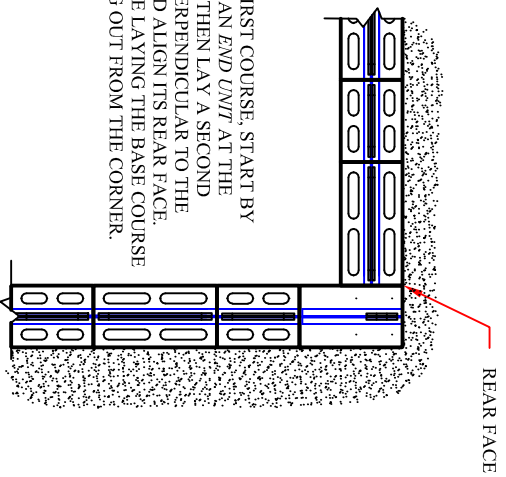
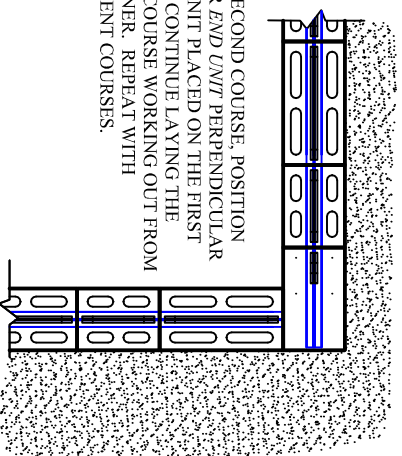


USING 20" CORNER/END UNITS
(INCLUDED IN THE COMBO BUNDLE)



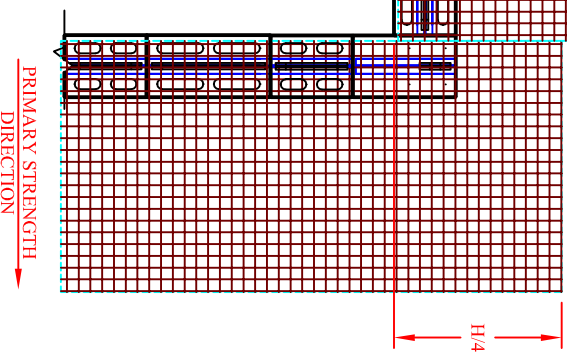
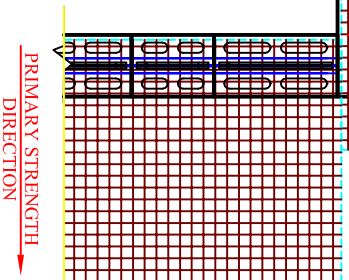
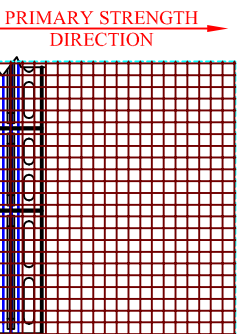
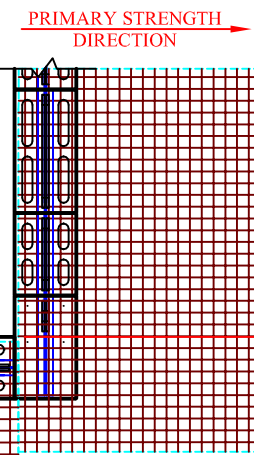
ON THE FIRST COURSE, START BY PLACING AN *END UNIT* AT THE CORNER, THEN LAY A SECOND BLOCK PERPENDICULAR TO THE FIRST AND ALIGN ITS REAR FACE. CONTINUE LAYING THE BASE COURSE WORKING OUT FROM THE CORNER.



ON THE SECOND COURSE, POSITION ANOTHER *END UNIT* PERPENDICULAR TO THE UNIT PLACED ON THE FIRST COURSE. CONTINUE LAYING THE SECOND COURSE WORKING OUT FROM THE CORNER. REPEAT WITH SUBSEQUENT COURSES.

NOTE: ALL CORES NEED TO BE FILLED WITH CLEAR STONE

ON THE FIRST WALL COURSE WHERE GEOSYNTHETIC REINFORCEMENT IS SPECIFIED, LAY THE GEOGRID BEYOND THE CORNER OF THE WALL AT A DISTANCE OF 1/4 THE HEIGHT OF THE WALL, ENSURING IT IS PLACED WITHIN 25mm [1.0"] OF THE FACE OF THE BLOCK. CONTINUE THE GEOGRID ALONG THE ADJOINING WALL STARTING AT THE BACK OF THE PREVIOUS - DO NOT OVERLAP THE TWO SECTIONS OF GEOGRID



ON THE SECOND WALL COURSE WHERE GEOSYNTHETIC REINFORCEMENT IS SPECIFIED, ALTERNATE THE REINFORCEMENT DIRECTION. CONTINUE THE GEOGRID ALONG THE ADJOINING WALL STARTING AT THE BACK OF THE PREVIOUS - DO NOT OVERLAP THE TWO SECTIONS OF GEOGRID

This graphic represents a preliminary, non site-specific design. If used for construction, a registered professional engineer must be retained to review & approve the design, confirm site conditions, and inspect construction.

Nueva 150 Wall System
90-Degree Inside Corner Details

