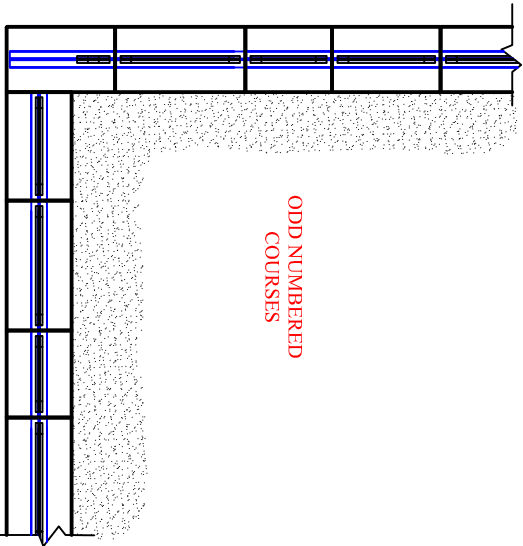
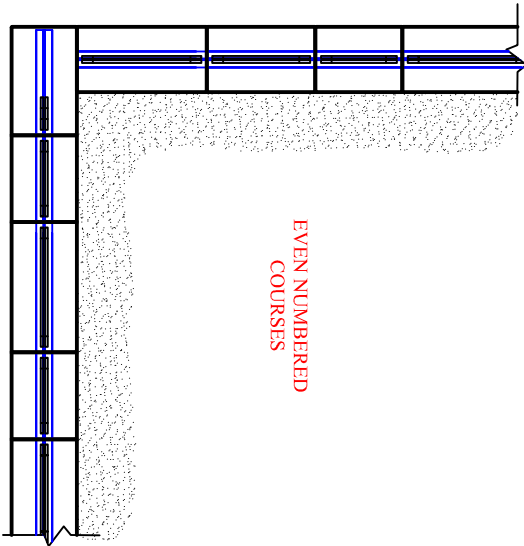


USING 20" CORNER/END UNITS
(INCLUDED IN THE COMBO BUNDLE)



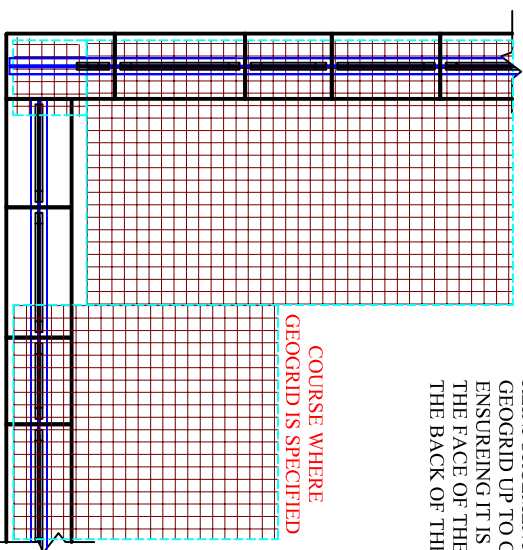
ODD NUMBERED COURSES

APPLY CONSTRUCTION ADHESIVE ON END/CORNER UNITS



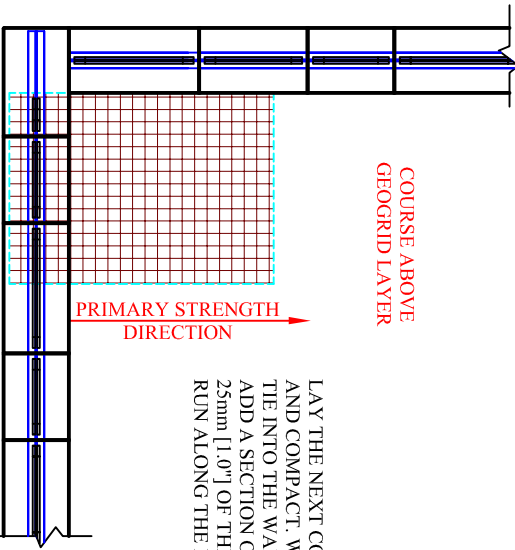
EVEN NUMBERED COURSES

PRIMARY STRENGTH DIRECTION



COURSE WHERE GEOGRID IS SPECIFIED

SHIM USING GEOSYNTHETIC REINFORCEMENT AS REQUIRED ABOVE THE CORNER BLOCK.



COURSE ABOVE GEOGRID LAYER

PRIMARY STRENGTH DIRECTION

ON EACH WALL COURSE WHERE GEOSYNTHETIC REINFORCEMENT IS SPECIFIED, LAY THE GEOGRID UP TO CORNER OF THE WALL, ENSURING IT IS PLACED WITHIN 25mm [1.0"] OF THE FACE OF THE BLOCK AND RUNNING ALONG THE BACK OF THE ADJOINING WALL.

CONTINUE THE GEOGRID ALONG THE ADJOINING WALL STARTING AT THE BACK OF THE PREVIOUS - DO NOT OVERLAP THE TWO SECTIONS OF GEOGRID

LAY THE NEXT COURSE OF BLOCK, BACKFILL AND COMPACT. WHERE THE GEOGRID DID NOT FIT INTO THE WALL ON THE PREVIOUS COURSE, ADD A SECTION OF GEOGRID. PLACE WITHIN 25mm [1.0"] OF THE FACE OF THE BLOCK AND RUN ALONG THE BACK OF THE ADJACENT WALL.

NOTE: ALL CORES NEED TO BE FILLED WITH CLEAR STONE



This graphic represents a preliminary, non site-specific design. If used for construction, a registered professional engineer must be retained to review & approve the design, confirm site conditions, and inspect construction.

Nueva 75 Wall System
90-Degree Outside Corner Details