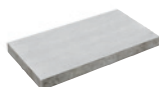


Nueva® Slab 60mm

SIZES



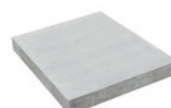
8x16 Small Rectangle
7.87 x 15.75"
(200 x 400mm)
Individually Packaged



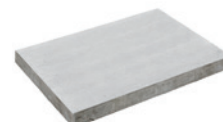
12x24 Rectangle
11.81 x 23.62"
(300 x 600mm)
Individually Packaged



8x16 Small Rectangle
7.87 x 15.75"
(200 x 400mm)



16x16 Stone
15.75 x 15.75"
(400 x 400mm)



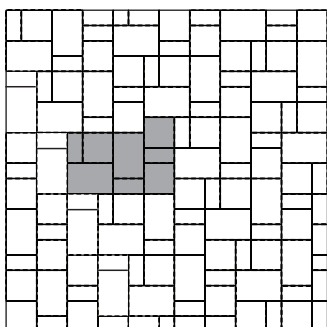
16x24 Stone
15.75 x 23.62"
(400 x 600mm)

Random Bundle

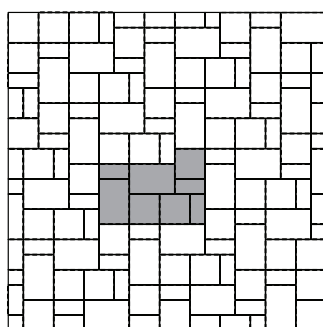
All 3 sizes packaged together
(3 - 8x16, 3 - 16x16, 2 - 16x24 per layer)

PATTERNS

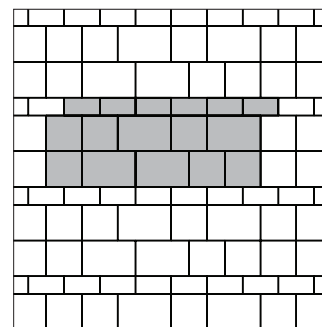
NOTE: AUTOCad DWG and PAT files are available for all Nueva® Slab patterns.



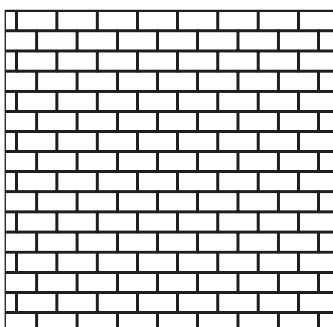
Pattern A
(Random Bundle L-Shape)



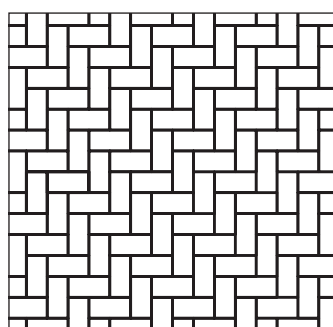
Pattern B
(Random Bundle L-Shape)



Pattern C
(Random Bundle Running Bond)



Pattern D
(8x16 Half Running Bond)



Pattern E
(8x16 Herringbone)

Stone	8x16 Stone		16x16 Stone		16x24 Stone	
	%	Ratio	%	Ratio	%	Ratio
Pattern A	20	3	40	3	40	2
Pattern B	20	3	40	3	40	2
Pattern C	20	3	40	3	40	2
Pattern D	100	1				
Pattern E	100	1				

INSTALLATION NOTES:

- This 60mm product is recommended for use in pedestrian applications only (eg. Patios, walkways, pool sides) and is not suitable for any vehicular traffic. Improper use is not covered by warranty.
- The use of a paver roller compactor is recommended to avoid damage. If using a vibrating plate compactor, a protective pad (eg. Urethane) must be used between the pavers and compactor. Damage to the pavers caused by improper compaction is not covered by warranty.