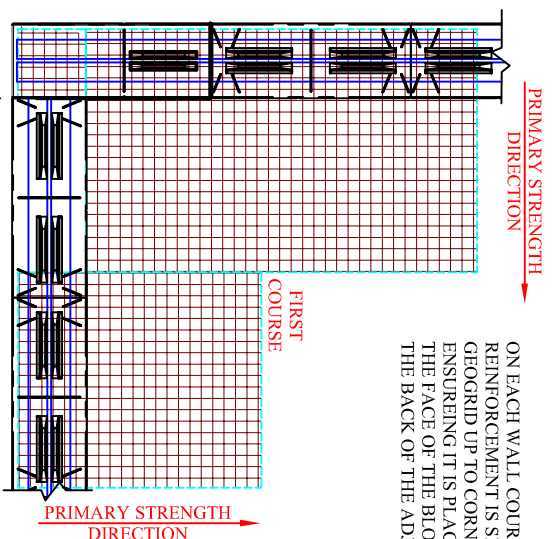


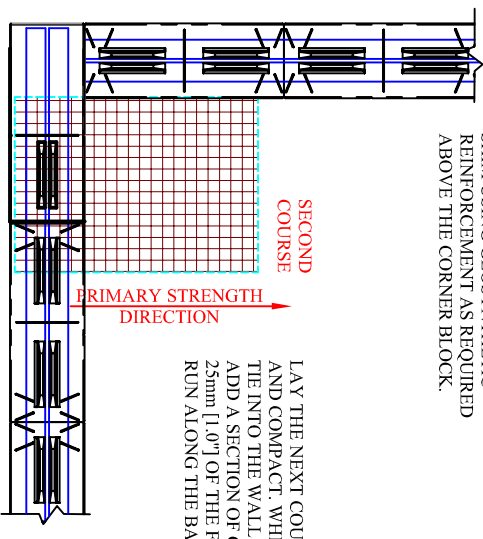
STARTING AT THE THIRD COURSE, CUT UNITS (SHADED IN RED) TO MAINTAIN BOND LINES. USE ADHESIVE AS REQUIRED TO SECURE INTO PLACE



ON EACH WALL COURSE THAT GEOSYNTHETIC REINFORCEMENT IS SPECIFIED, LAY THE GEOSGRID UP TO CORNER OF THE WALL, ENSURING IT IS PLACED WITHIN 25mm [1.0"] OF THE FACE OF THE BLOCK AND RUNNING ALONG THE BACK OF THE ADJOINING WALL.

CONTINUE THE GEOSGRID ALONG THE ADJOINING WALL STARTING AT THE BACK OF THE PREVIOUS - DO NOT OVERLAP THE TWO SECTIONS OF GEOSGRID

SHIM USING GEOSYNTHETIC REINFORCEMENT AS REQUIRED ABOVE THE CORNER BLOCK.



LAY THE NEXT COURSE OF BLOCK, BACKFILL AND COMPACT. WHERE THE GEOSGRID DID NOT THE INTO THE WALL ON THE PREVIOUS COURSE, ADD A SECTION OF GEOSGRID. PLACE WITHIN 25mm [1.0"] OF THE FACE OF THE BLOCK AND RUN ALONG THE BACK OF THE ADJACENT WALL.



This graphic represents a preliminary, non site-specific design. If used for construction, a registered professional engineer must be retained to review & approve the design, confirm site conditions, and inspect construction.

Protterra™ Retaining Wall System 90-Degree Outside Corner for Geogrid Wall Details (Smooth Face Walls)