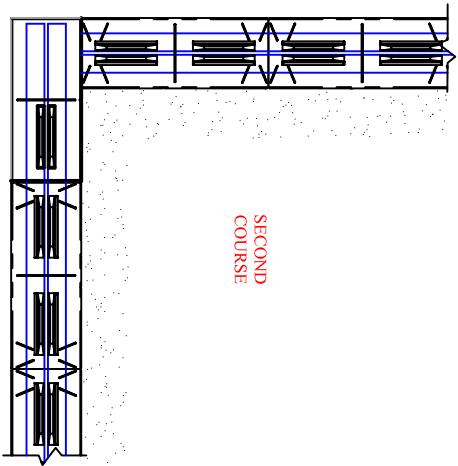
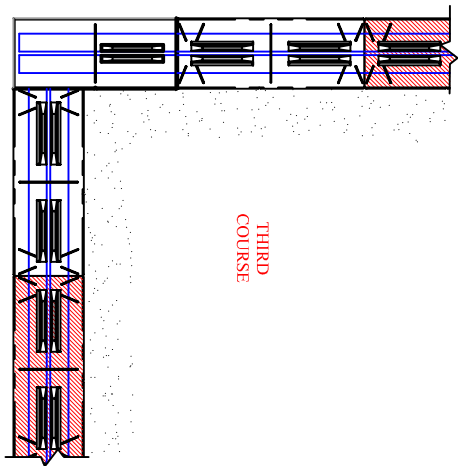


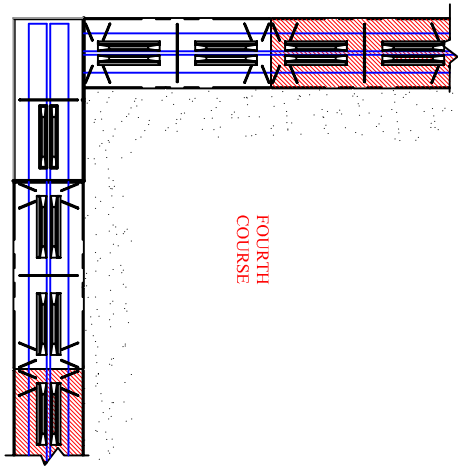
FIRST COURSE



SECOND COURSE

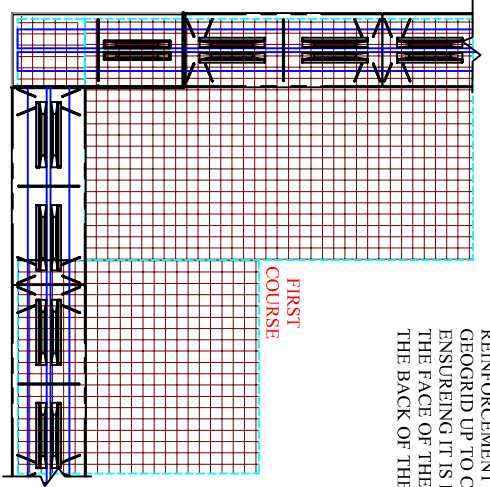


THIRD COURSE



FOURTH COURSE

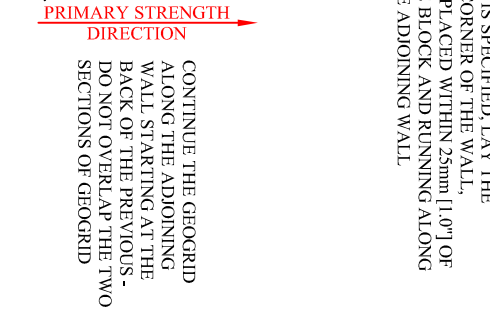
STARTING AT THE THIRD COURSE, CUT UNITS, (SHADED IN RED) TO MAINTAIN RUNNING BOND. USE ADHESIVE AS REQUIRED TO SECURE INTO PLACE



PRIMARY STRENGTH DIRECTION

FIRST COURSE

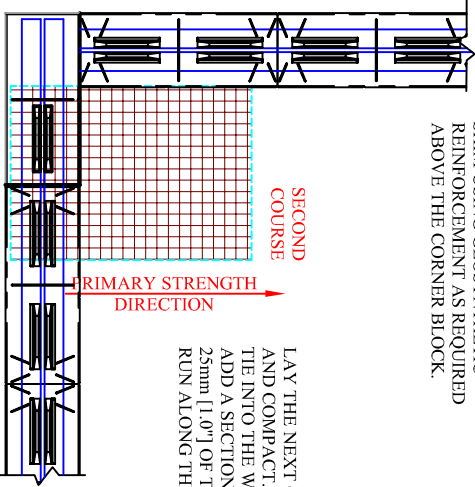
ON EACH WALL COURSE THAT GEOSYNTHETIC REINFORCEMENT IS SPECIFIED, LAY THE GEORGRID UP TO CORNER OF THE WALL, ENSURING IT IS PLACED WITHIN 25mm [1.0"] OF THE FACE OF THE BLOCK AND RUNNING ALONG THE BACK OF THE ADJOINING WALL



PRIMARY STRENGTH DIRECTION

CONTINUE THE GEORGRID ALONG THE ADJOINING WALL STARTING AT THE BACK OF THE PREVIOUS - DO NOT OVERLAP THE TWO SECTIONS OF GEORGRID

SHIM USING GEOSYNTHETIC REINFORCEMENT AS REQUIRED ABOVE THE CORNER BLOCK.



SECOND COURSE

PRIMARY STRENGTH DIRECTION

LAY THE NEXT COURSE OF BLOCK, BACKFILL AND COMPACT. WHERE THE GEORGRID DID NOT FIT INTO THE WALL ON THE PREVIOUS COURSE, ADD A SECTION OF GEORGRID. PLACE WITHIN 25mm [1.0"] OF THE FACE OF THE BLOCK AND RUN ALONG THE BACK OF THE ADJACENT WALL



This graphic represents a preliminary, non site-specific design. If used for construction, a registered professional engineer must be retained to review & approve the design, confirm site conditions, and inspect construction.

Proterra™ Retaining Wall System
90-Degree Outside Corner for Geogrid Wall
Details (Split Face Walls)