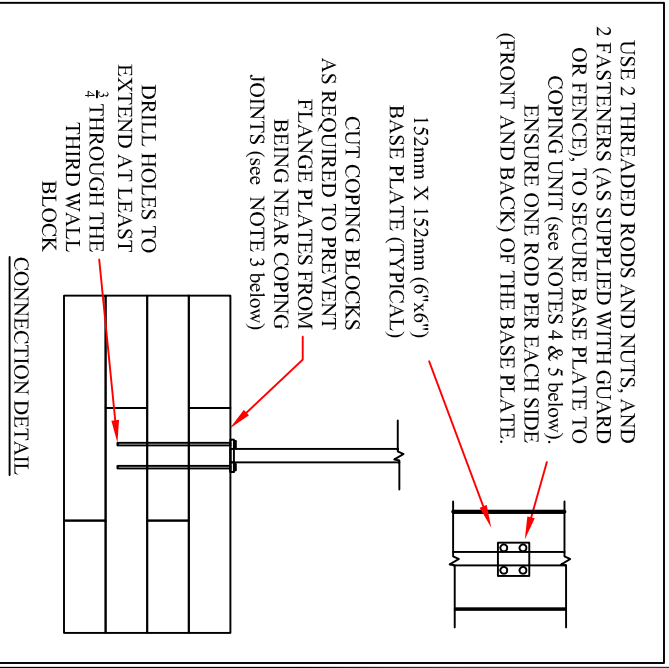


- NOTES:
1. GUARD AND FENCES TO BE DESIGN BY OTHERS IN ACCORDANCE WITH APPLICABLE ONTARIO BUILDING CODE (OBC) REGULATIONS AND CSA STANDARDS.
 2. FOR GUARDS, MAXIMUM HEIGHT 1,220mm (4'), MAXIMUM POST SPACING 1,296mm (4'-3"). FOR CHAIN LINK FENCES, MAXIMUM HEIGHT 1,830mm (6'), POST SPACING BETWEEN 1,372mm (4'-6") AND 2,440mm (8').
 3. PLACE COPING UNITS AND MARK BOLT HOLE LOCATIONS PRIOR TO WALL COMPLETION; BOLT HOLES TO BE A MINIMUM OF 62.5mm (2.5") FROM ANY EDGE OF A UNIT. CUT COPING UNITS AS REQUIRED TO MEET SPACING REQUIREMENTS.
 4. MARK LOCATION OF HOLES IN BASE PLATE ONTO COPING, AND DRILL TWO HOLES THROUGH TOP THREE COURSES OF WALL BLOCK. INSERT 10M H.D. GALVANIZED THREADED RODS INTO EACH DRILL HOLE AND EPOXY INTO PLACE. FASTEN BASE PLATE USING GALVANIZED NUTS. TRIM ROD AS REQUIRED.
 5. DO NOT USE EXPANSION FASTENERS; USE ONLY ADHESIVE OR SCREW TYPES.
 6. NOT INTENDED FOR VEHICLE IMPACT LOADS OR WHERE SOLID FENCES ARE BEING USED.



This graphic represents a preliminary, non site-specific design. If used for construction, a registered professional engineer must be retained to review & approve the design, confirm site conditions, and inspect construction.

Protterra™ Retaining Wall System
Guard or Chain Link Fence
Surface Mounted onto Wall